 Yukon Workers' Compensation Health and Safety Board	Part:	Return to Work & Rehabilitation		
	Board Approval:	<i>Original Signed by Chair</i>	Effective Date:	July 1, 2008
	Number:	RE-13	Last Revised:	
	Board Order:		Review Date:	

DETERMINING SUITABLE EMPLOYMENT & EARNINGS CAPACITY LOSS

When referencing any of the return to work policies, it is important to recognize the responsibilities of the employer and worker within the context of the complete return to work process. Therefore, the return to work model must be considered in its entirety and not only the specific guidelines under an individual policy.

GENERAL INFORMATION

The injured worker, the employer, the Yukon Workers' Compensation Health & Safety Board (YWCHSB) and health care providers share responsibility for assisting the worker in mitigating the effects of a work-related injury. This is typically achieved through the recovery, rehabilitation and return to work process.

In some cases, a worker will be unable to fully overcome the effects of a work-related injury and will continue to have a loss of earnings capacity. This worker is entitled to compensation for the difference between their pre-injury earnings, as determined under YWCHSB policy, "Loss of Earnings Benefits", and the worker's estimated earnings capacity once rehabilitation is completed.

PURPOSE

This policy outlines how the YWCHSB will estimate a worker's loss of earning capacity, to ensure that a fair, reasonable and predictable approach is followed.

Together with the series of YWCHSB policies on return to work, this policy ensures a collaborative and client-centered approach that assists a worker to recover from his or her injury and to return to pre-injury work or to employability in another suitable occupation.

Appendix A outlines the key steps in determining a suitable occupation and earnings capacity loss.

PREVENTION

Preventing workplace injuries is the responsibility of everyone in the workplace. When injuries do occur, however, it is important for workers and employers to try to minimize the impacts by focusing on efforts to return the injured worker to their workplace, performing safe and productive work as soon as it is medically possible. Prevention of further injuries and recurrences is also an integral part of the return to work process.

POLICY STATEMENT

1. Estimating Loss of Earning Capacity

Estimating a worker's loss of earning capacity due to a work-related injury requires:

- a) determination of the worker's pre-injury earnings and subtraction of 50 per cent (50%) of the CPP/QPP disability benefit, if the worker is receiving one, in accordance with YWCSHB policy, "Loss of Earnings Benefits";
- b) identification of a suitable occupation for the worker, usually based on a vocational assessment;
- c) estimation of the earnings that the worker could earn in that suitable occupation; and
- d) calculation of the difference between a) and c).

An illustration of estimated earnings loss calculations is provided in Appendix B.

2. Identification of a Suitable Occupation

The worker's suitable occupation will generally be identified through the vocational assessment process, as per YWCHSB policy, "Vocational Rehabilitation". This is in cases where the worker is unable to fully recover from a work-related injury and also unable to return to his or her pre-injury job.

In all cases, except where the worker is considered capable of earning minimum wage, the occupation that the worker has chosen (or a default option, if applicable) must meet the definition of "suitable occupation" set out in YWCHSB policy, "Duty to Co-operate Part 1 of 4: Early and Safe Return to Work Plans".

Determining Suitable Employment & Earnings Capacity Loss

The worker's ability to remain employed in Yukon, as well as the worker's employment pattern (full-time, part-time, seasonal), are factors considered in the identification of a suitable occupation.

3. Earnings for the Suitable Occupation

The YWCHSB will rely on current (i.e. not more than three years old) published labour market information or, in the absence of published labour market information, on a labour market survey of at least three suitable employers when determining estimated earnings for the suitable occupation.

Wage scales applied to a suitable occupation will be based on the greater of Yukon wage scales for the occupation or the wage scale in the jurisdiction where the worker resides. Where a Yukon wage scale is unavailable, Canadian wage scales will be used.

Once the YWCHSB has identified an appropriate wage scale, an appropriate earnings level on the scale must be determined.

Where a worker has the physical functional ability to work at least three hours a day, that worker will be considered capable of earning at least the territorial minimum wage (in effect at the time the policy is applied).

a) Acquiring a New skill – Estimating Earnings

The estimated earnings level on the wage scale for workers whose suitable occupation involves acquiring a new skill set or entering a new field will be based on the average of the base entry wage.

b) Transferable Skills Development – Estimating Earnings

For workers whose return to work plan is designed to improve existing or transferable skills for the suitable occupation, estimated earnings will be the mid-point on the scale.

c) Actual Earnings in the Suitable Occupation

If the worker has actual earnings in the suitable occupation, the YWCHSB will use those earnings in estimating the worker's loss of earning capacity if:

- i) the actual wages are higher than the average entry wage or average wages as appropriate under a) or b) above; or
- ii) the actual wages are within 90 per cent (90%) of the average entry wages or average wages, as appropriate under a) or b) above.

4. Application of YWCHSB Policy, “Employment Readiness”

If, as part of the worker’s return to work plan, the YWCHSB is providing the worker with an employment readiness program it will be administered under YWCHSB policy, “Employment Readiness”.

5. Indexing of Benefits

The worker’s post-injury earnings capacity (actual or estimated) will be indexed annually by the same percentage as determined for average weekly earnings under section 35 of the *Act*.

6. Periodic Review

Where a worker has a loss of earnings capacity the YWCHSB will partner with the worker to annually determine if there has been:

- a) a change in the worker’s earnings;
- b) a change in the worker’s fitness for employment; or
- c) any new information that may affect the worker’s claim.

Workers under this policy who do not incur a loss of earnings as a result of their work-related injury can apply for a review should their fitness for employment change due to the injury.

Changes made to the worker’s estimated loss of earning capacity will be communicated to the worker verbally, where possible, and in writing. These changes will also be documented on the claim file.

ROLES AND RESPONSIBILITIES

Workers have an ongoing obligation to inform the YWCHSB of any changes in their circumstances that may affect the estimation of their loss of earnings capacity, in accordance with section 14 of the *Act*, and also are responsible for assisting the employer in identifying available, suitable employment and for accepting that suitable employment, in accordance with section 40 of the *Act*. Workers must also fully participate in the vocational assessment process as well as in any vocational rehabilitation plan that may result from the assessment.

Employers are responsible for providing suitable employment that is available and consistent with the worker’s functional abilities and for providing the YWCHSB with

Chair

Determining Suitable Employment & Earnings Capacity Loss

information concerning the worker's return to work, in accordance with section 40 of the *Act*.

The YWCHSB is responsible for estimating the worker's loss of earnings capacity and for explaining the process to the injured worker -- including how it fits within the return to work and rehabilitation process -- as early as is appropriate. The primary focus is on the worker's recovery and return to work.

The YWCHSB is also responsible for ensuring that the worker understands the process of estimating his or her post-injury earning capacity and for ensuring the worker is advised of the outcome and the implications for his or her benefits.

APPLICATION

This policy applies to the Board of Directors, President/CEO and staff of the YWCHSB; and to the Workers' Compensation Appeal Tribunal. It also applies to all workers and employers as of July 1, 2008, regardless of the date of injury.

EXCEPTIONAL CIRCUMSTANCES

In cases where the individual circumstances of a case are such that the provisions of this policy cannot be applied, or to do so would lead to unfair or unintended results, the YWCHSB will decide the case based on YWCHSB policy, "Merits and Justice of the Case". Such a decision will be considered for that specific case only and will not be precedent setting.

APPEALS

Decisions made by the YWCHSB under this policy, can be appealed directly in writing to the hearing officer of the YWCHSB in accordance with subsection 53(1) of the *Act*. Notice of the appeal must be filed within 24 months of the date of the decision by the YWCHSB, in accordance with section 52 of the *Act*.

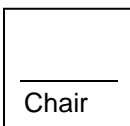
ACT REFERENCES

Sections 14, 35, 40, 52 and 53

POLICY REFERENCES

EL-01, "Loss of Earnings Benefits"

EN-02, "Merits and Justice of the Case"


Chair

Determining Suitable Employment & Earnings Capacity Loss

RE-02-1, "Duty to Co-operate Part 1 of 4: Early and Safe Return to Work Plans"

RE-02-4, "Duty to Co-operate Part 4 of 4: Penalties for Non-co-operation"

RE-10, "Vocational Rehabilitation"

RE-12, "Employment Readiness"

HISTORY

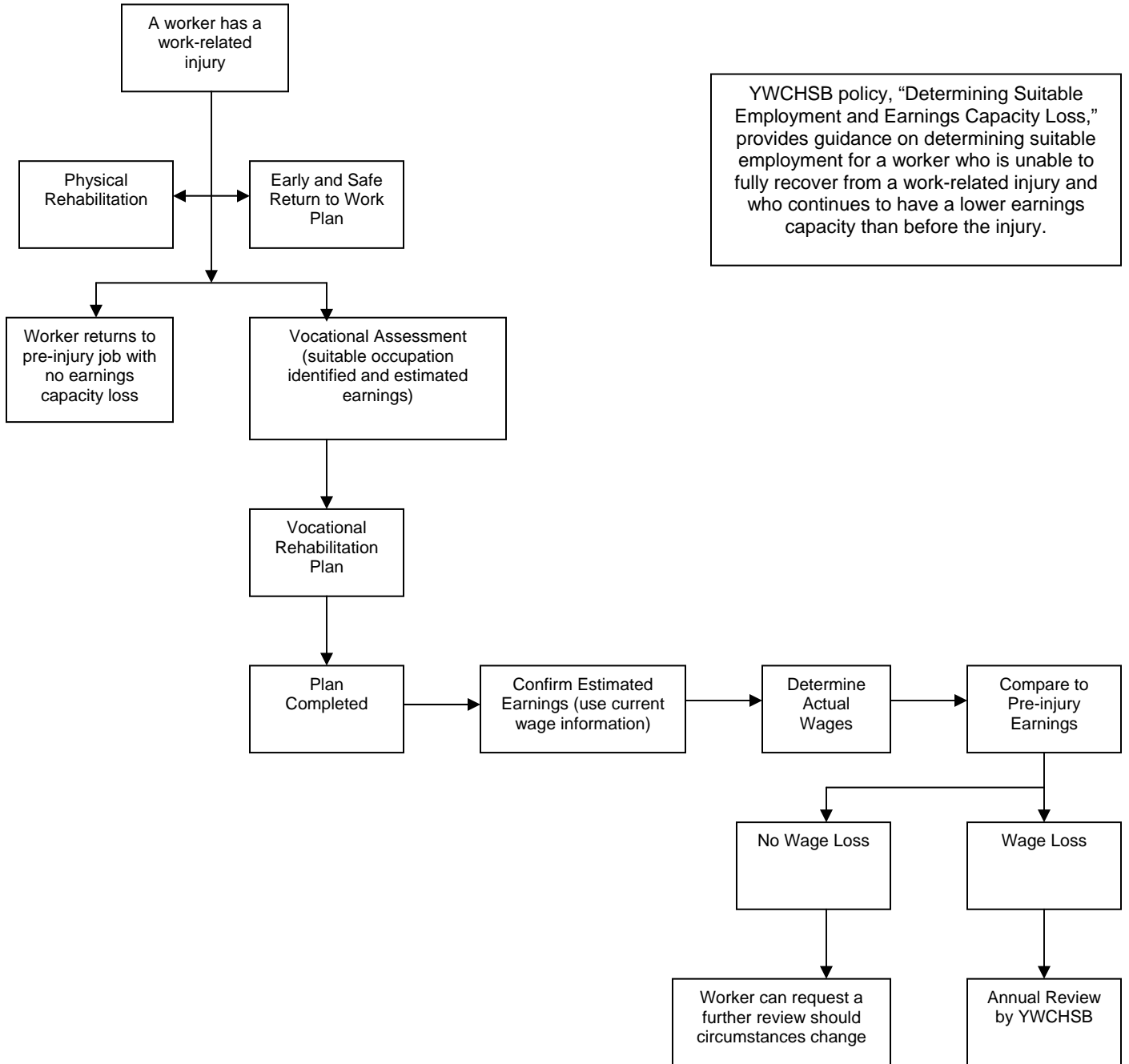
CS-08, "Determining Suitable Employment and Earnings Capacity Loss", effective January 1, 2007, revoked July 1, 2008.

CS-08, "Fitness for Employment, Suitable Occupation, Deeming," effective November 9, 1994, revoked January 1, 2007.

Chair

Determining Suitable Employment & Earnings Capacity Loss

APPENDIX A



YWCHSB policy, "Determining Suitable Employment and Earnings Capacity Loss," provides guidance on determining suitable employment for a worker who is unable to fully recover from a work-related injury and who continues to have a lower earnings capacity than before the injury.

Chair

Determining Suitable Employment & Earnings Capacity Loss

APPENDIX B

Wage loss benefits are paid to a worker when a compensable injury results in a loss of earnings ability. The difference between the worker's average earnings before the injury (minus 50 percent (50%) of the worker's CPP/QPP disability benefit if he/she is receiving one) and what the worker is determined capable of earning after the injury determines the amount of wage loss benefits paid. For example¹:

Example 1 (Worker who is also receiving CPP/QPP disability benefits)	Year One	Year Two (4% indexing)
Earnings before disability	\$ 30,000	\$ 31,200
Minus 50% of CPP/QPP disability benefit if worker is receiving one (e.g. \$12,000 per year)	- (50% x \$12,000)	- (50% x \$12,300 <i>(if CPP indexed at 2.5 %))</i>)
Earnings with CPP/QPP disability off-set	24,000	25,050
Post-injury earnings	20,000	20,800
Difference	4,000	4,250
X 75%		
	\$ 3,000	\$ 3,188

Example 2 (Seasonal Worker)	Year One	Year Two (4% indexing)
Earnings before disability (Long-term rate – using EL-01)	\$ 50,000	\$ 52,000
Post-injury earnings	20,000	20,800
Difference (less than MWR)	30,000	31,200
X 75%		
	\$22,500	\$ 23,400

Example 3 (Earning Over MWR)	Year One	Year Two (4% indexing)
Earnings before disability	\$150,000	\$156,000
Post-injury earnings	20,000	20,800
Difference (over MWR)	130,000	135,200
MWR	\$ 69,500	\$ 71,000 (est.)
Post – injury earnings	20,000	20,800
Paid only to MWR	49,500	50,200
X 75%		
	\$ 37,125	\$ 37,650

¹ These examples are intended for illustration purposes only. They represent hypothetical CPP/QPP benefit levels and do not take into account factors such as average weekly wage calculations, and review adjustments, etc.

